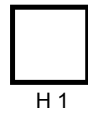


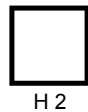
DEPTH



H 1



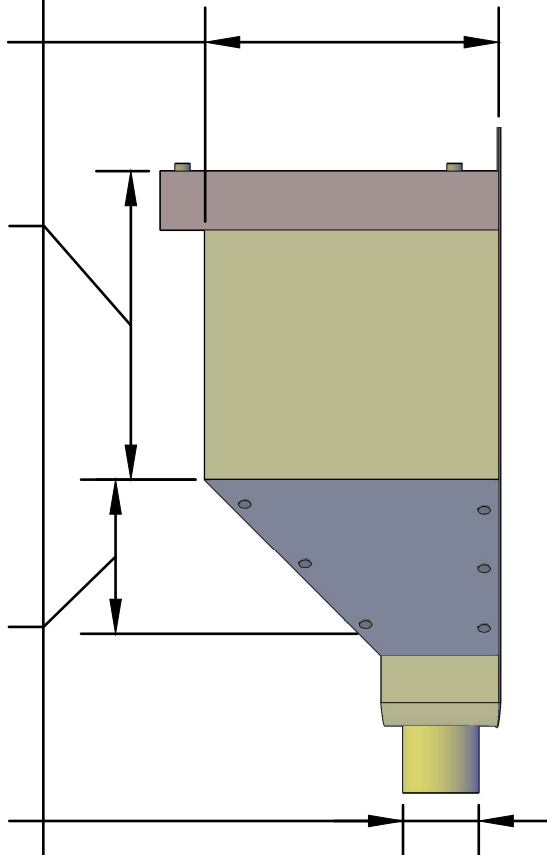
WIDTH



H 2



OUTLET DIA



- MATERIAL:**
- 16 Oz. Copper
 - 20 Oz. Copper
 - 24 Ga. Galv. Steel
 - 22 Ga. Galv. Steel
 - .032" Aluminum
 - .040" Aluminum
 - .050" Aluminum
 - .063" Aluminum (WELDED ONLY)
- 16 Oz. Lead Coated Copper
 - 20 Oz. Lead Coated Copper
- Color: _____
- Finish: _____

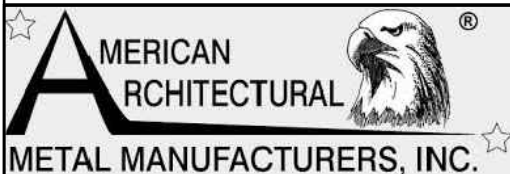
QUANTITY:
#: _____

PROJECT NAME:

QUOTE:
ORDER: PO# _____

INSTALLER:

SIGNATURE



CUSTOM FABRICATION

STANDARD LEADER/CONDUCTOR HEAD WITH ROUND OUTLET